



UNISEX HOODIE SWEATSHIRTS
CRUISER DENIM



STSU719

The unisex denim hoodie sweatshirt

Terry Sweatshirt

85% Organic ring-spun combed cotton, 15% Recycled polyester
300 GSM

- Set-in sleeve
- Double layered hood in self fabric
- Round drawcords in matching body colour with metal tipping
- Metal eyelets
- Single jersey back neck tape
- Self fabric half moon at back neck
- Single needle topstitch at neckline and along hood opening
- 1x1 rib at sleeve hem and bottom hem
- Armhole, sleeve hem and bottom hem with twin needle topstitch
- Kangaroo pocket at front
- Faded look on all seams due to garment washing
- Indigo yarn dyed product, each garment may vary in appearance, colour may bleed, follow our care label
- Read carefully print recommendations

COLORS

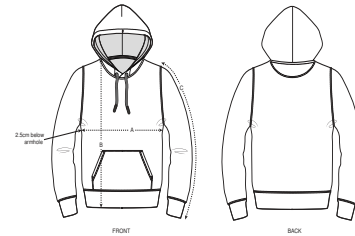


MID WASHED
INDIGO

MEDIUM FIT

	XS	S	M	L	XL
--	----	---	---	---	----

Size guide



SIZES		XS	S	M	L	XL
A	Half Chest	49	51.5	54	57	60
B	Body Length	65	68	72	74	76
C	Sleeve Length	61.5	64	65.5	67	68.5

Combo options



Wash and dry separately, colour bleeds, Stella Tracer Denim, Stanley Stepper Denim wash and iron inside out, do not iron on print. This garment is an indigo dyed item.

Each garment may vary in appearance. Fits all kinds of print techniques. Please download our printing guide for details. Denim washed effect will become

stronger over time. Colour may transfer by rubbing onto light coloured materials. Use mild detergent which contains no bleach.



STANLEY/STELLA

